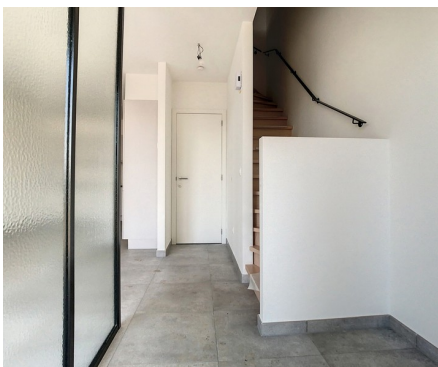


## Duplex for rent

Du Roy de Blicquy laan 5E 1933 Sterrebeek

**€ 1.490**

 2  1  92 m<sup>2</sup>  8 m<sup>2</sup>



# Description

Golf course of Sterrebeek (The National) - At the limit with Tervuren. Nice duplex of +/- 92m2 in an exceptional environment. The apartment consists of an entrance with cloakroom and guest toilet, a bright living room of +/-25m2 with a nice view and access to a east facing terrace of +/- 8m2, an open fully equipped kitchen, a laundry room, 2 bedrooms one of which has access to the private terrace (+/-12,5m2, +/-12,5m2), bathroom with double wash-basin and shower, seperate toilet.videophone, cellar, parking space in the building, 2 bicycle hooks. Provision for common charges: 150€/month. The golf domain offers an exceptional living environment, only 2 steps from all facilities (shops, fitness centre with pool in and outdoor, international schools (American, German, BSB)) and public transport (tram 39 Montgomery). Close to the capital, Sterea offers a truly unique lifestyle. Lighting, rods and a built-in closet will be installed. Free from 28/02/2025

## Details

### General information

Construction year  
**2023**

State  
**Very good state**

Type of construction  
**Attached**

Floors  
**2**

Terraces  
**2**

Terrace 1  
**8 m<sup>2</sup>**  
**west**

Parkings inside  
**1**

### Layout

Living room  
**25 m<sup>2</sup>**

Kitchen  
**Yes (US fully fitted)**

Bedroom 1  
**13 m<sup>2</sup>**

Bedroom 2  
**13 m<sup>2</sup>**

Bathroom  
**shower**

Toilets  
**2**

Cellar  
**Yes**

Laundry  
**Yes**

### In the proximity

Environment  
**Central**

Shops at  
**500 m**

School at  
**1.000 m**

Public transport at  
**800 m**

Public transport nearby  
**Yes**

### Dimensions

Habitable surface  
**92 m<sup>2</sup>**

### Comfort

Handicap friendly  
**No**

Videophone  
**Yes**

Elevator  
**Yes**

Pool  
**No**

### Energy

Windows  
**Vinyl**

Electricity certificate  
**Yes, conform**

Heating type  
**Gas**

Heating  
**Underfloor heating partially**

### Financial

Price  
**€ 1.490 per month**

Costs  
**€ 150 monthly**

Reference  
**Blicquy5E**

Available  
**28 February 2025**

### Spatial planning

Flooding area  
**Not located in flood area**