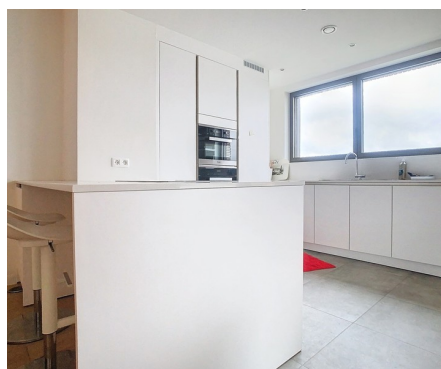


Flat for rent

Du Roy de Blicquy laan 27 12 1933 Sterrebeek

€ 2.450

 3  2  158 m²  18 m²



Description

Golf of Sterrebeek - on the limit with Tervuren - Unique newly built first floor apartment with panoramic views over the golf course The National. The apartment of 158m2 consists of an entrance hall with a cloakroom, toilet, very spacious and bright living room of 51m2 with gas fireplace M-Design, large covered terrace of 18m2 with panoramic views over the golf course, open fully equipped kitchen (Sie-Matic). 3 bedrooms (19m2,12m2,12m2) with bath and shower room. Underfloor heating. Screens to the south facing windows. Ventilation type D. Secured access. 2 parking spaces in the basement, spacious cellar. Commun charges: 200€/month. Not to be missed! Free 01/11/2024.

Details

General information

Construction year
2019

State
New

Floor
1

Floors
3

Terraces
1

Terrace 1
18 m²
north-west

Parking inside
Yes

Parkings inside
2

Layout

Living room
51 m²

Kitchen
11 m² (hyper equipped)

Bedroom 1
19 m²

Bedroom 2
12 m²

Bedroom 3
12 m²

Bathroom
all comfort

Shower rooms
1

Toilets
2

Cellar
Yes

In the proximity

Environment
Golf

Dimensions

Habitable surface
158 m²

Comfort

Handicap friendly
Yes

Elevator
Yes

Pool
No

Energy

EPC
89.22 kWh/m²

CO2 emission
64.26kg CO2/m²

Windows
Aluminium

Electricity certificate
Yes, conform

Heating type
Gas (centr. heat.)

Heating
Individual

Financial

Price
€ 2.450 per month

Costs
€ 200 monthly

Reference
Du Roy de Blicquy 27/12

Available
Immediately

Spatial planning

Flooding area
Not located in flood area