


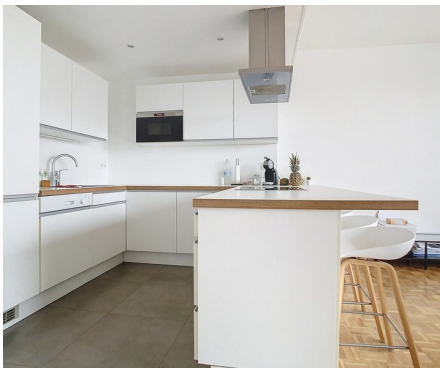
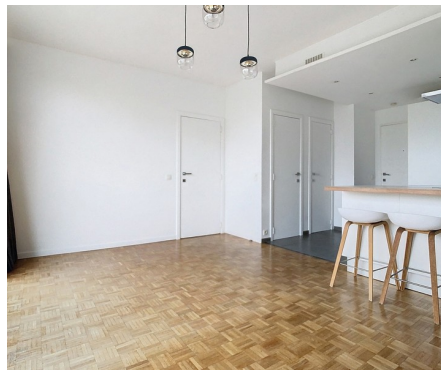


Flat for rent

Avenue Emile Van Becelaere 28A 1170 Watermael-Boitsfort

€ 1.050

 1  1  50 m²



Description

VAN BECELAERE - In a quiet and green area, on the 6th floor of a nice residence with lift, lovely flat consisting of a +/-30m2 living room with fully equipped American kitchen and access to a large south-facing terrace with nice views, storage room, separate toilet, 1 bedroom (+/-14m2) with wardrobe and shower room (shower, washbasin unit and washing machine), cellar, light fittings and curtains have been installed - Visitor parking - Monthly provision for common charges (including heating and water): 185€ - A MUST SEE! Translated with DeepL.com (free version)

Details

General information

Construction year

1974

Renovation

2015

State

Very good state

Type of construction

Attached

Floor

6

Floors

8

Terraces

1

Terrace 1

south

Layout

Living room

30 m²

Kitchen

Yes (US hyper equipped)

Bedroom 1

14 m²

Bathroom

shower

Toilets

1

Cellar

Yes

In the proximity

Environment

Free sight

Dimensions

Habitable surface

50 m²

Comfort

Handicap friendly

Yes

Videophone

Yes

Elevator

Yes

Pool

No

Energy

EPC

175 kWh/m²

CO2 emission

35kg CO2/m²

Electricity certificate

Yes, conform

Heating type

Gas (centr. heat.)

Heating

Collective

Financial

Price

€ 1.050 per month

Costs

€ 185 monthly

Reference

Van Becelaere 28A

Available

Tbd with the tenant

01 February 2025

Spatial planning

Flooding area

Not located in flood area