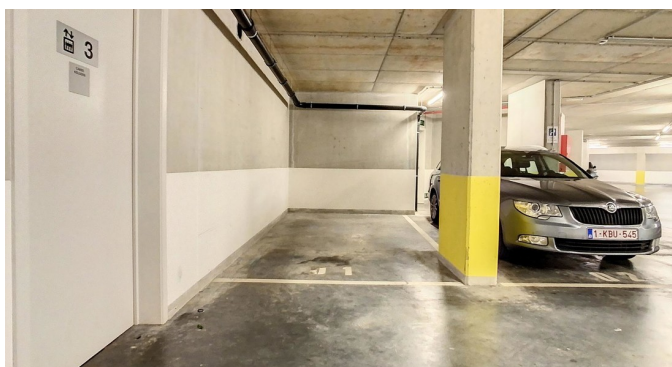
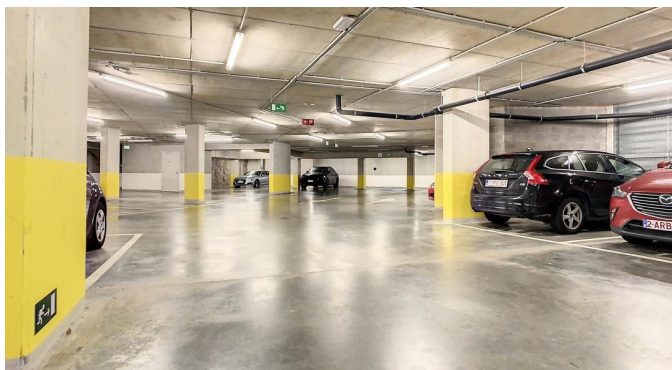


Inside parking for rent

Van Maerlantstraat 7 1000 Brussels

€ 125

🏠 10 m²



Description

EUROPEAN QUARTER/SCHUMAN/JOURDAN - In a building complex located Rue Maerlant and Rue Belliard, 1 parking space with a depth of +/-4m and width of +/-2.40m in a secured parking - Electric access door to the basement.

Details

General information	In the proximity	Financial
Construction year	Shops at	Price
2013	100 m	€ 125 per month
State	Public transport at	VAT applied
Good state	200 m	No
Floor	Public transport nearby	Reference
-2	Yes	Maerlant 7 - Emplacement de parking
Garage		Available
Yes		01 April 2025
Parking inside		
Yes		
Parkings inside		
1		