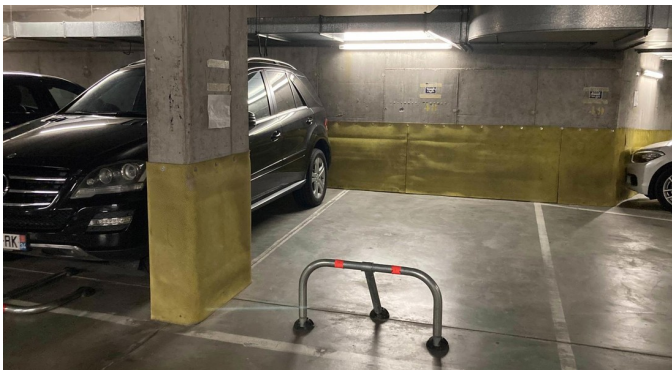
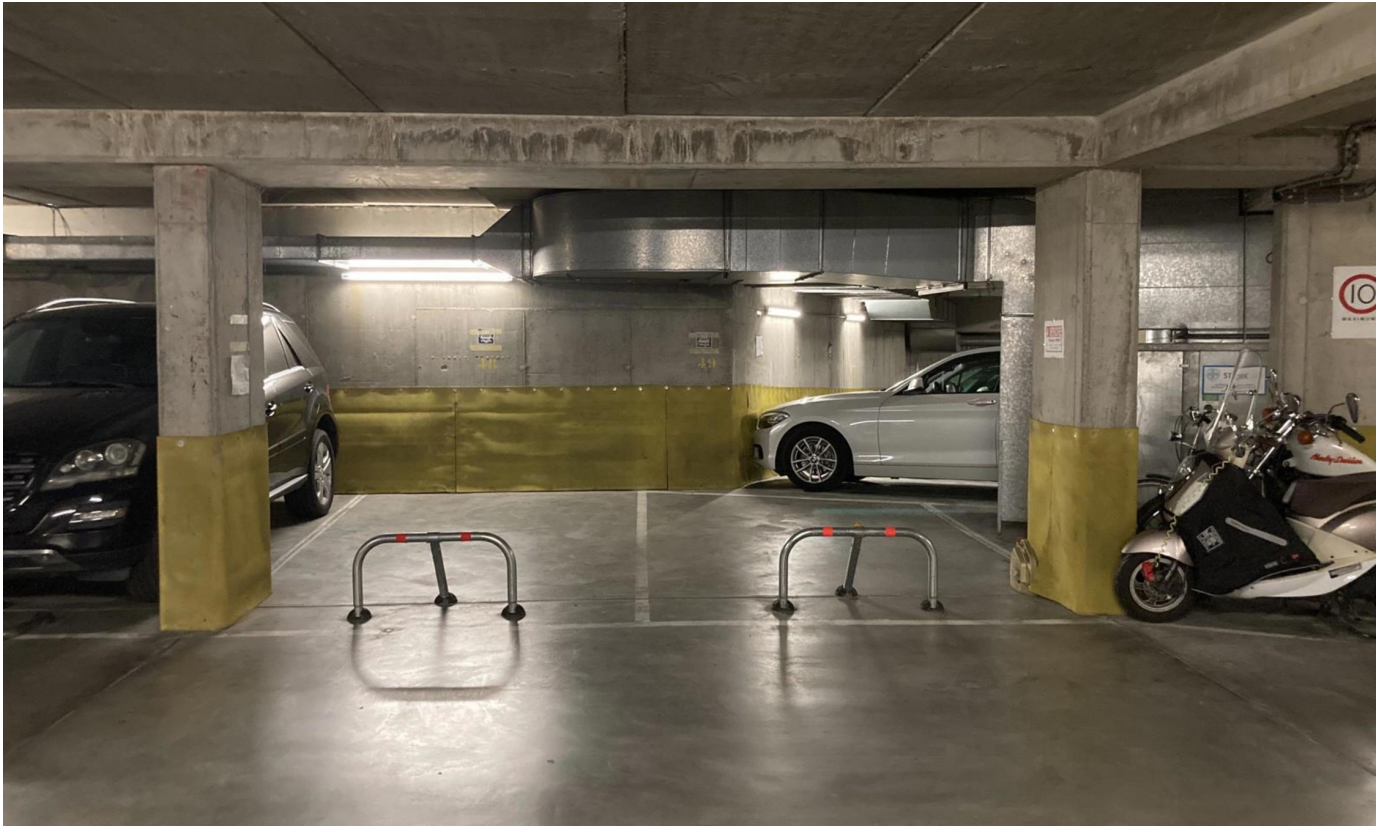


Inside parking for sale

Avenue Jean Monnet 2-12 1200 Woluwe-Saint-Lambert

€ 18.000



Description

CORA area - In a building complex located Avenue de Calabre and Jean Monnet, a parking space with a depth of +/-5m and width of +/-2.40m, secured with a folding parking barrier - Electric access door to the basement - Possibility of buying 4 spaces in this car park.

Details

General information

Construction year

1994

State

Good state

Garage

Yes

Parking inside

Yes

Parkings inside

2

In the proximity

Shops nearby

Yes

School nearby

Yes

Public transport nearby

Yes

Financial

Price

€ 18.000

Land registry income

€ 141

VAT applied

No

Reference

Monnet 2 - Emplacement de parking

Available

At the contract

01 January 2023

Spatial planning

Destination

Not disclosed

Building permission

Not disclosed

Intimation

Not disclosed

Parcelling permission

Not disclosed

Right of pre-emption

Not disclosed